

cre8play®





LONGEIKTY

Strong
like
Mom



**FOR OVER 20 YEARS, OUR CORE
FOCUS HAS BEEN TO DESIGN AND
BUILD PLAY ENVIRONMENTS THAT
STAND OUT FROM THE ORDINARY.**

Whether it's playground products or custom design, our promise is to deliver exceptional experiences bursting with originality. Our immersive play design model allows us to deliver a wow-factor that you just don't come by every day.

Most of our small-ish crew has been with us since day one. Together, we push boundaries to move beyond run-of-the-mill play environments. We enjoy working with parks professionals, landscape architects, and more who share in our enthusiasm for creative, inclusive, and meaningful spaces.

CUSTOM

TIRED OF THE SAME-OLE, SAME-OLE? WE GOT YOU.

Custom is where it all began for Cre8Play. From day one, our team's focus has been unconventional design that is special. We look at every project with a fresh set of eyes so that the end result is truly original down to every last detail. We dig a little deeper and obsess a bit more over the impact of our creations. Kids notice, adults notice, and communities notice.







PARK MEADOWS MALL | LONE TREE, CO



FIFTH THIRD PARK | SPARTANBURG, SC



MIRACLE LEAGUE OF SOUTHWESTERN PA | CRANBERRY TOWNSHIP, PA



FAIRY WONDERLAND | PRESCOTT, WI



A



B



C



D

A. MIRACLES IN MOON | MOON TOWNSHIP, PA **B. LOOKOUT TOWER | SHAKOPEE, MN**
C. SMITH RANCH PARK | EAGLE MOUNTAIN, UT **D. VICTORIA GARDENS | RANCHO CUCAMONGA, CA**



E



F



G

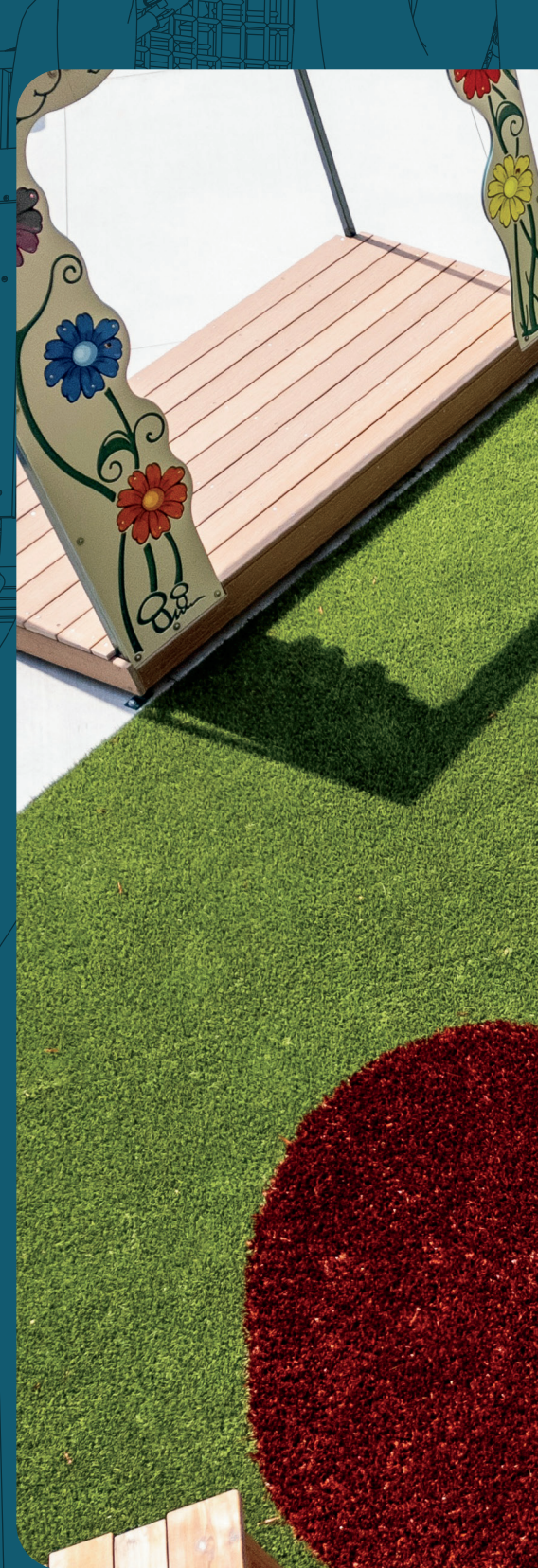
E. ADVENTURE HEIGHTS PARK | SPANISH FORK, UT F. NUTTAL AVENUE PARK | EDGEWOOD, MD
 G. SOPHIE AND MADIGAN'S PLAYGROUND | FREDERICK, MD

READY FOR PLAY

Our playground products are designed to have a custom look and feel, however they are ready for play when you are!

We achieve high-design in a long-lasting product through a unique mix of materials. Structural steel, composite wood, HDPE, and our proprietary blend of Glass Fiber Reinforced Concrete (GFRC) are used for durability in extreme temperatures, temperature shifts, and for an exceptional form and finish.

The difference is seen up close and personal.







BIG T BARN | 1000241 | AGES 5-12



A. CORN CRIB | 1000311 | AGES 2-12 **B. WINDMILL TOWER** | 1000306 | AGES 5-12



A



B



C

A. SLIDE MOUND | 1000318 | AGES 2-5 *SURFACING NOT INCLUDED **B. OAK LANDING | 1000226 | AGES 2-5**
C. TREE STUMP SLIDE | 1000224 | AGES 2-12



JURASSIC PLAY MOUND* | 90001S | AGES 2-12 *SURFACING NOT INCLUDED

DEEP WOODS

DESIGN, EXPERIENCE, MATERIALS... IT ALL MATTERS

Deep Woods modular play products highlight our commitment to detail and realism. An immersive nature themed collection offering different levels of unique challenges for all. Climbers, bridges, slides, and more can be arranged in endless configurations for many ways to cre8play.





A



A. SHADOW LAKE | 80002 | AREA REQUIRED: 37'-4" X 36'-0" | AGES: 5-12

B



C



B. WILDWOOD FOREST | 80014 | AREA REQUIRED 54'-0" X 28'-10" | AGES 2-12

C. TIMBERLAND | 80012 | AREA REQUIRED 45'-4" X 38'-0" | AGES 5-12

A

Clubhouse
Roof

Ladder
Climber

Valley
Crossing

Log Pillar

Stream Slide

Incline
Bridge

Cargo Net

Wood
Pile



B

Tree Stump

Cargo Net

Tin Roof

Tube Slide

Big Oak

Four Points
Net Climber

Wood Pile

Wood Plank
w/Telescope

Oak Slice

Climbing
Wall

Crawl Tube

Log Transfer
Platform

Tin Roof

Sectional
Slide



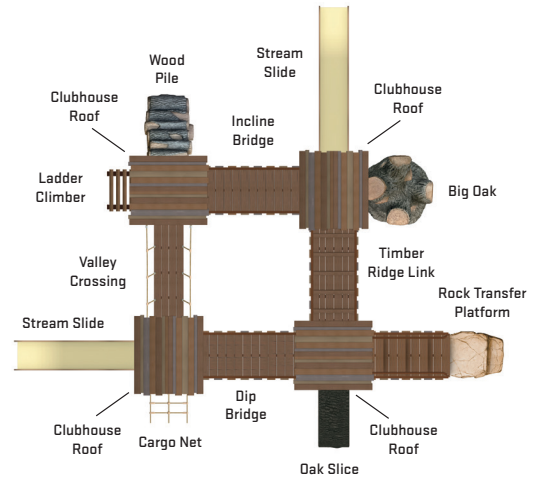
A. WHISPERING WILLOW | 80013 | AREA REQUIRED 39'-1" X 30'-4" | AGES 2-12
B. RESORT CANYON | 80009 | AREA REQUIRED: 51'-2" X 32'-11" | AGES: 2-12

C



C. NEW HORIZON | 80003 | AREA REQUIRED: 42'-3" X 24'-0" | AGES: 2-12

A



A. NEW HOPE VISTA | 80006 | AREA REQUIRED: 39'-0" X 35'-10" | AGES: 5-12

B



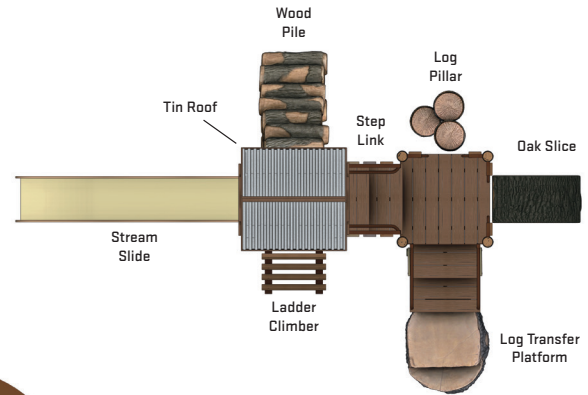
C



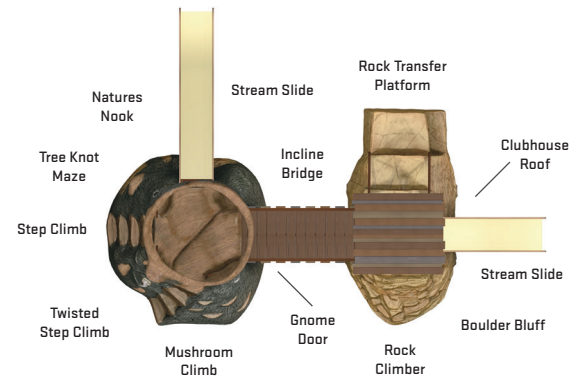
B. ADVENTUREVILLE | 80007 | AREA REQUIRED: 46'-6" X 38'-3" | AGES: 5-12

C. PINE CREEK | 80004 | AREA REQUIRED: 36'-6" X 37'-3" | AGES: 2-12

A

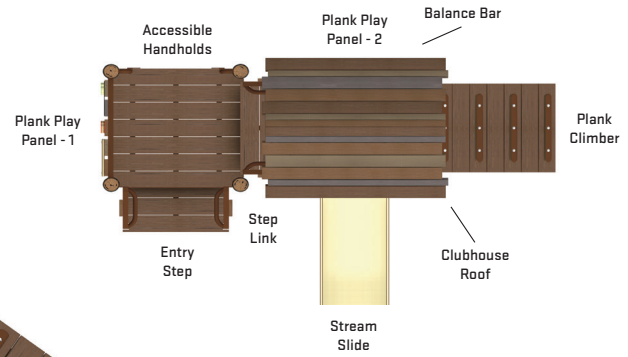


B

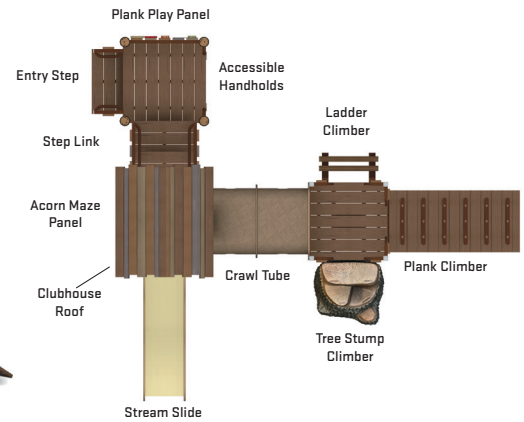


A. PRAIRIE HILLS | 80005 | AREA REQUIRED: 32'-4" X 24'-6" | AGES: 2-12
B. HOBBIT HOLLOW | 80010 | AREA REQUIRED 32'-11" X 27'-2" | AGES 2-12

C



D



C. PATTY CAKE | 80008 | AREA REQUIRED: 22'-11" X 19'-8" | AGES 2-5

D. ACORN ADVENTURE | 80011 | AREA REQUIRED 28'-8" X 26'-3" | AGES 2-5

CLIMB

THE CLIMB

Whether whimsical or realistic, our climbers offer 360 degrees of immersive fun. Integrated handholds and varying challenges are incorporated to make play possible for all ages and abilities. Don't see what you're looking for? Give us a shout— we're always adding new products to our lineup.



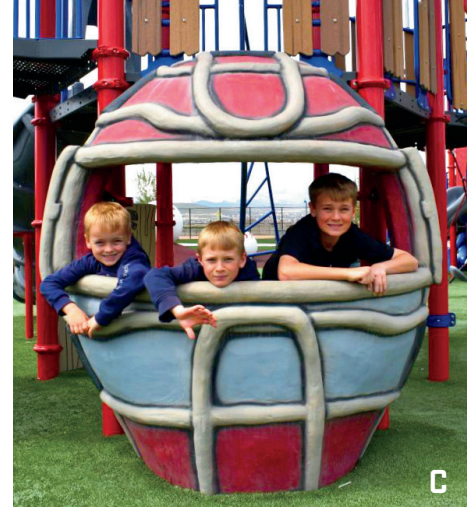




A



B



C



D



E



F



G



H

A. SOCCER BALL W/SHOE CLIMBER | 1000341 B. BASEBALL CLIMBER | 1000022 C. CATCHER'S MASK CLIMBER | 1000248
 D. GIANT BASEBALL BAT | 1000257 E. BASKETBALL CLIMBER | 1000023 F. HAT CLIMBER | 1000276 SHOWN WITH CUSTOM LOGO
 G. BALL CLIMBER | 1000246 H. BASEBALL BASE CLIMBER | 1000293-4 AVAILABLE IN 31" AND 43"



I. CATCHER'S MITT CLIMBER | 1000349 J. BASEBALL GLOVE CLIMBER W/SLIDE | 1000229 K. FIREFIGHTER HELMET CLIMBER | 1000275
L. SHOE CLIMBER | 1000284 M. SOCCER BALL CLIMBER | 1000024 N. SPORTS CLIMBER | 1000250



A



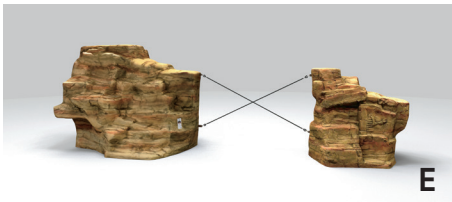
B



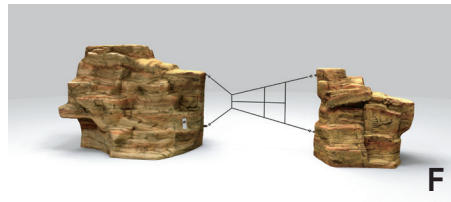
C



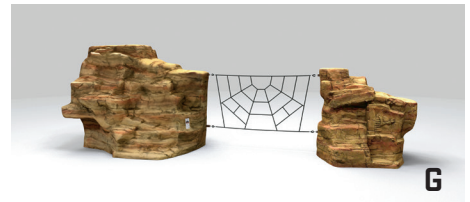
D



E



F



G

A. STRATO ROCK CLIMBER | 1000011 **B. STRATO ROCK CLIMBER W/SLIDE ATTACHMENT | 1000011** **C. LEDGE ROCK CLIMBER | 1000020**
D. ARCH ROCK CLIMBER | 1000291 **E. CROSSCUT ROPE LINK | 8000203** **F. KITE ROPE LINK | 8000201** **G. SPIDER WEB ROPE LINK | 8000001**



H



I



J



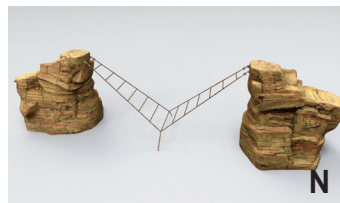
K



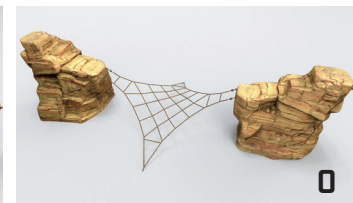
L



M



N



O

- H. CREST ROCK CLIMBER | 1000271 | W/NET TABS | 1000292** **I. SWITCH BACK CLIMBER | 1000031 | W/SLIDE | 1000033**
J. LEDGE ROCK CLIMBER W/ROPE TABS 1000021 | W/NET TABS | 1000295 A, B, AB **K. STRATO ROCK CLIMBER W/ROPE TABS | 1000010**
L. ANGLED NET CLIMBER | 8000207 4' **M. DOUBLE ANGLED NET CLIMBER | 8000209 6'**
N. DOUBLE LADDER NET CLIMBER | 8000211 LINK 4' TO 4', 4' TO 6', AND 6' TO 6' **O. FOUR POINTS NET CLIMBER | 8000210 LINK 4' TO 4'**



A



B



C



D



E



F

A. BOULDERS | 1000042-44 AVAILABLE IN MEDIUM AND LARGE **B. BIG OAK CLIMBER** | 1000259-307 **C. TIPPED STUMP CLIMBER** | 1000285
D. SPIDER WEB CLIMBER | 1000090 **E. PUMPKIN CLIMBER** | 1000282 **F. STRAWBERRY CLIMBER** | 1000251



G



H



I



J



K

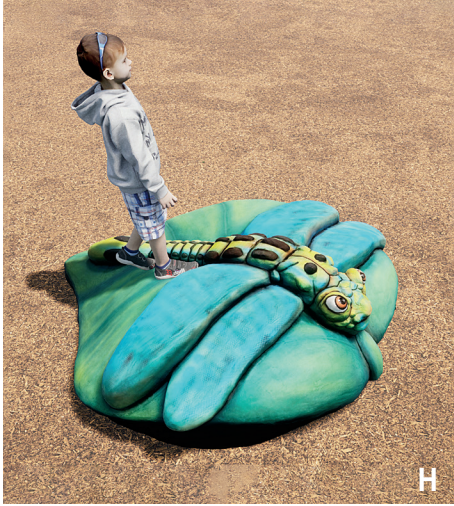


L

G. CANNON CLIMBER | 1000298 H. WAGON CLIMBER | 1000287 I. TRACTOR CLIMBER | 1000286 J. ACORN CLIMBER | 1000350-51
K. BARREL & SACK CLIMBER | 1000264 L. HAY BALE STACK CLIMBER | 1000312



**A. LION CLIMBER | 1000277 B. LIONESS W/CUB CLIMBER | 1000278 C. BARBER THE BEAR CRAWL CLIMBER | 1000265
D. SEA TURTLE CLIMBER | 1000336 E. BEAR CLIMBER | 1000340 F. FOX CLIMBER | 1000338 G. SNAKE CLIMBER | 1000339**



H. DRAGONFLY CLIMBER | 1000272 I. PIG CLIMBER | 1000281 J. SLEEPING PIG CLIMBER | 1000337 K. COW CLIMBER | 1000296
L. COW CLIMBER | 1000296-CC M. BUTTERFLY CLIMBER | 1000267 N. BUFFALO CLIMBER | 1000266



A



B



C



D

A. OCTOPUS CLIMBER | 1000279 B. ALI-GATOR CLIMBER | 1000297

C. CROCODILE CLIMBER | 1000299 D. FROG CLIMBER | 1000227



E



F



G



H



I



J

E. CRAB CLIMBER | 1000249 F. WHALE HEAD & TAIL CLIMBER | 1000304-05 G. JUMPING DOLPHIN CLIMBER | 1000302
H. DIVING DOLPHIN CLIMBER | 100030 I. WAVE CLIMBER | 1000303 J. TURTLE CLIMBER | 1000252

CRAWL

CRAWL, BALANCE, SWING, INTERACT

Classic products with a twist. Our Crawl, Balance, Swing, and Interact products can be used in unique arrangements to create a complete play environment, or to compliment a standard playground. Mix and match for your own unique experience.







A



B

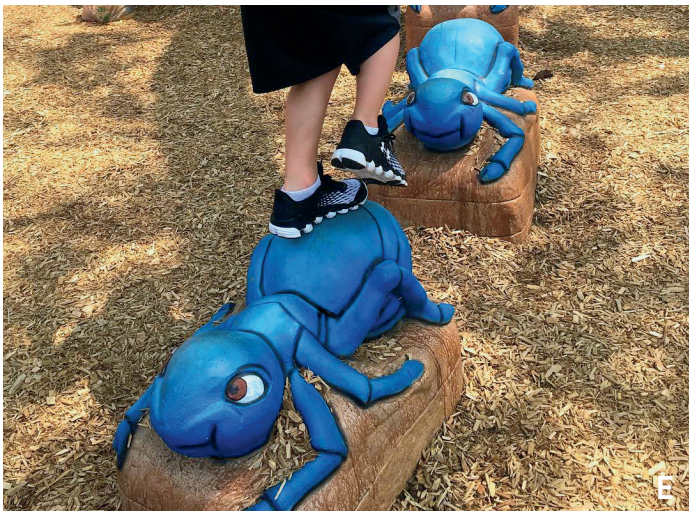


C

A. LOG MOUND TUNNEL | 1000063 *SURFACING NOT INCLUDED **B. BARREL CRAWL | 1000203** **C. CRAWL MOUND | 1000316 *SURFACING NOT INCLUDED**



D. HOLLOW LOG CRAWL | 1000060-61 AVAILABLE IN 4' AND 6' **E. BASEBALL BAT CRAWL | 1000204** **F. FOOTBALL CRAWL | 1000327**



A. CHICKEN STEPPER | 1000325 **B. BASEBALL STEPPER | 1000243** **C. SLINGSHOT BALANCE BEAM | 1000313**
D. FALLEN TREE BALANCE BEAM | 1000073 **E. ANT STEPPER | 1000093** **F. LADYBUG STEPPER | 1000092**



G



H



I



J



K



L



M



N



O

G. BASEBALL BAT BALANCE BEAM | 1000074 **H. TREE STUMP STEPPER** | 100260-61 AVAILABLE IN MEDIUM AND LARGE
I. LOG BALANCE BEAM | 1000070-71 AVAILABLE IN 4' AND 6' **J. LOG STEPPER** | 1000050-53 AVAILABLE IN 8", 16", 24" AND 30"
K. STONE SLICE | 1000205 **L. STONE STEPPER** | 1000054-57 AVAILABLE IN 8", 16", 24" AND 30" **M. FROG STEPPER** | 1000221
N. TURTLE SHELL STEPPER | 1000222 **O. TREE SLICE** | 1000220



A



B

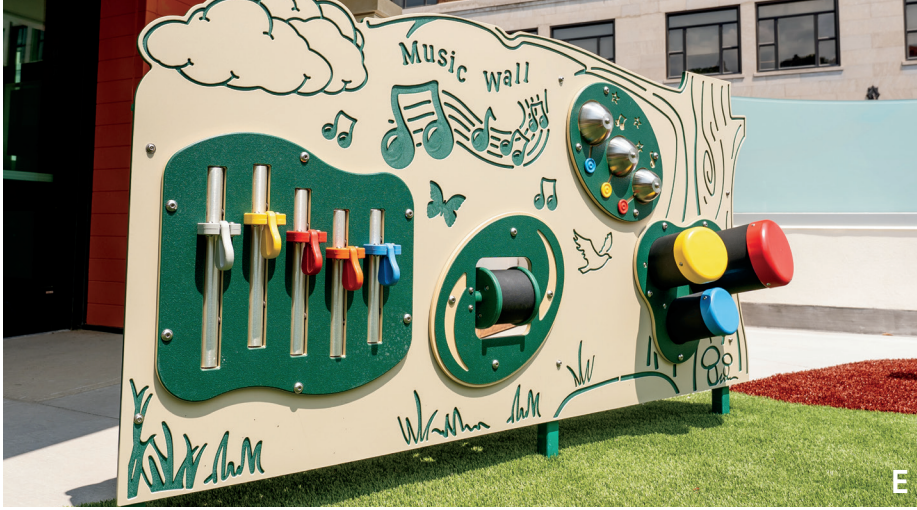


C



D

A. IRRIGATION SWING | 1000314-15 **B. TREE TRUNK SWING | 1000123**
C. SINGLE POST SWING - BASEBALL BAT | 1000132-33 **D. SINGLE POST SWING - TREE | 1000126-30**



E



F



G



H



I



J

E. MUSIC WALL | 1000333 F. SPINNING ROCK | 1000202 G. CLUBHOUSE | 1000270 H. GARDEN STAGE | 1000319
I. STONE ABACUS | 1000263 J. THE LODGE | 80015

STAND-OUT SEATING

Has sitting ever been so much fun? Both kids and adults will be immersed even further into the experience by the signature form and finish of our themed seating. Made from the same Glass Fiber Reinforced Concrete (GFRC) used in all of our playground products to withstand the most extreme weather conditions.







A



B



C



D

A. ACORN SEAT | 1000262 B. CATCHER'S MITT BENCH | 5000101 C. FALLEN TREE BENCH | 5000004 D. HAY BALE BENCH | 5000051



E



F



G



H

E. NEST BENCH | 5000102 **F. LEAF BENCH | 5000003** **G. HEAVY TIMBER BENCH | 5000103**
H. HALF LOG BENCH | 1000080-81 AVAILABLE IN 4' AND 6'

MIX AND MATCH

See one of our play systems but want a different climber, deck or link? Channel your inner artist and let us know what elements you'd like to swap in to customize your product play experience.







A



B



C



D



E



F

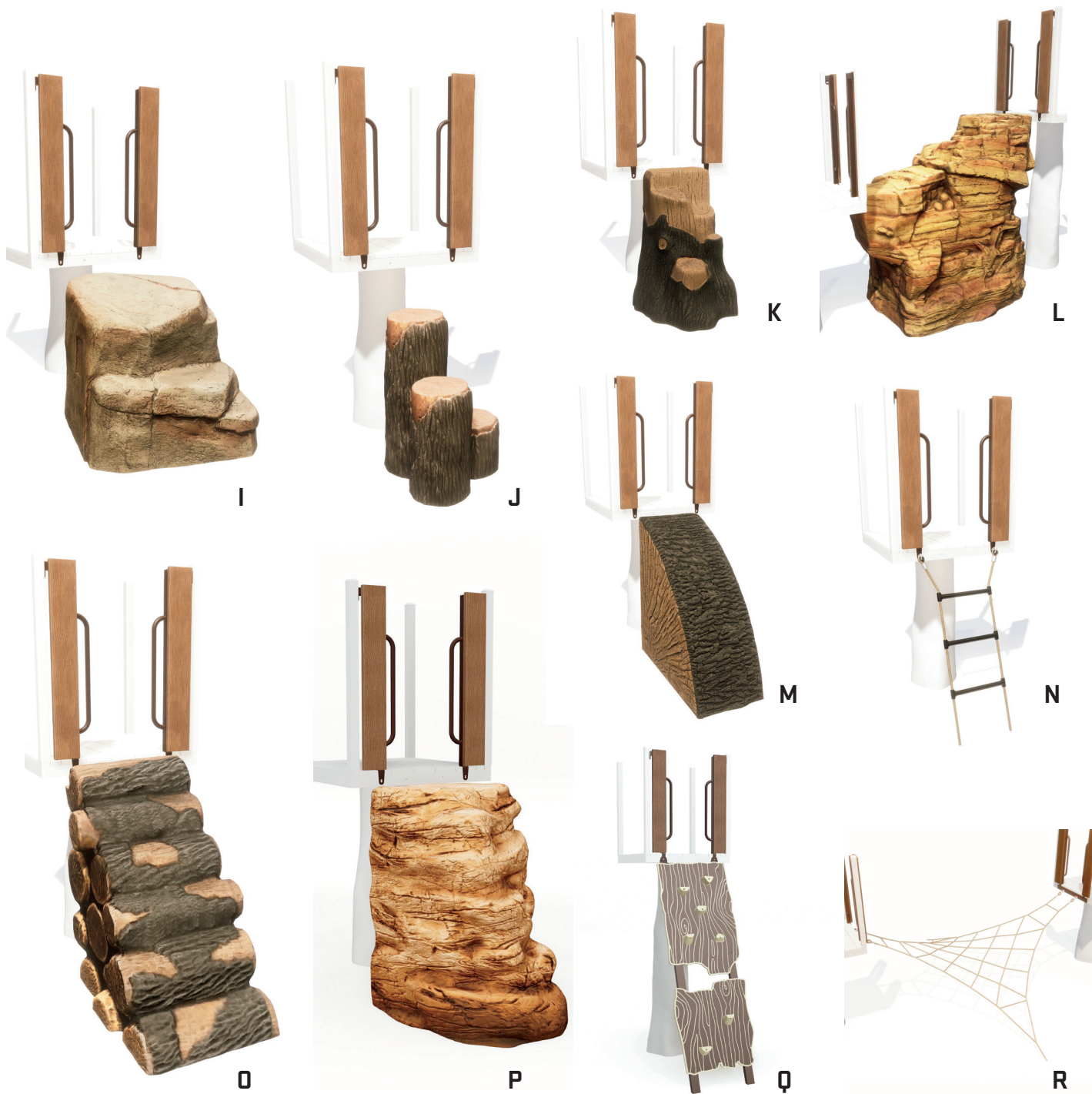


G



H

A. TREE FORT DECK AVAILABLE 2' - 7' **B. TREE POST DECK** AVAILABLE 2' - 7' **C. NATURE'S NOOK DECK** HEIGHTS 4' & 5'
D. BOULDER BLUFF DECK HEIGHT 3' **E. TREEHOUSE DECK** HEIGHT 8' **F. CARGO NET CLIMBER** ATTACHES TO 4' - 6' DECK
G. LADDER CLIMBER ATTACHES TO 3' - 8' DECK **H. BIG OAK CLIMBER** ATTACHES TO 3' - 6' DECK



- I. LARGE BOULDER CLIMBER** ATTACHES TO 3' - 4' DECK **J. LOG PILLAR CLIMBER** ATTACHES TO 3' - 5' DECK **K. TREE STUMP CLIMBER** ATTACHES TO 3' - 5' DECK
L. LEDGE ROCK CLIMBER ATTACHES TO 4' & 6' DECK **M. OAK SLICE CLIMBER** ATTACHES TO 3' - 5' DECK **N. ROPE LADDER** ATTACHES TO 4' - 8' DECK
O. WOOD PILE CLIMBER ATTACHES TO 4' & 5' DECK **P. CLIFF CLIMBER** ATTACHES TO 3' - 6' DECK **Q. CLIMBING WALL** ATTACHES TO 4' - 8' DECK
R. FOUR POINTS NET CLIMBER ATTACHES TO 4' DECKS



A



B



C



D



E



F



G



H



I



J

A. CRAWL TUBE **B. ARCH BRIDGE** **C. ACCESSIBLE STEP LINK 1'-3' ELEVATION CHANGE** **D. DIP BRIDGE** **E. INCLINE BRIDGE 1' ELEVATION CHANGE**
F. TIMBER RIDGE 2' ELEVATION CHANGE **G. VALLEY CROSSING 1' ELEVATION CHANGE | ATTACHES TO 2' - 5' DECK** **H. LEDGE ROCK LINK CONNECTS 4' TO 6' DECK**
I. PLANK TRANSFER ATTACHES TO 3' & 4' DECK **J. 3' LOG TRANSFER PLATFORM**



K



L



M



N



O



P



Q



R



S



T



U



V

- K.** 4' LOG TRANSFER PLATFORM **L.** 4' ROCK TRANSFER PLATFORM **M.** WOOD PLANK ENCLOSURE W/TELESCOPE **N.** SCAVENGER HUNT PANEL INCLUDES 10 MEDALLIONS **O.** WOOD PLANK ENCLOSURE **P.** SECTIONAL SLIDE VARIOUS CONFIGURATIONS, ATTACHES TO 3' - 7' DECK
Q. TUBE SLIDE VARIOUS CONFIGURATIONS ATTACHES TO 3' - 7' DECK **R.** STREAM SLIDE ATTACHES TO 2' - 6' DECK **S.** PINE TREE TOPPER
T. TREE CANOPY TOPPER **U.** TIN ROOF ATTACHES TO 2' - 7' DECK **V.** CLUBHOUSE ROOF ATTACHES TO 2' - 7' DECK

A PARTNERSHIP

People like working with us because we're fun,
we work harder, and we get better results.





CRE8PLAY.COM | 2401 EDGEWOOD AVE S. STE 200 ST LOUIS PARK, MN 55426 | 612.670.8195 |    
ALL IMAGES © CRE8PLAY 2026

Product Disclaimer: Designs, images, plans and concepts shown and/or developed during the design phase are intended to indicate general type and quality only. Products offered by Cre8Play, LLC are individually handcrafted and not factory manufactured. The Customer acknowledges that the final product may have subtle variations from the designs, images, plans and concepts and may differ slightly from one piece to another due to material characteristics and handcrafting. These minor variations may include slight color and pattern variations. Therefore, each piece has its own desired uniqueness. The information contained herein may change or be modified as necessary and without notice.

cre8play